

Emerging Type Torsion Gates

English Translation

Specification & Drawings

for International Search Report

on Patentability

T e r a M a t s u

Contents

	Volume
• International Search Report (Japanese)	3 pages
• Specification & claims (English)	12 pages
• Drawings (English)	11 pages

特許協力条約

発信人 日本国特許庁（国際調査機関）

代理人 大木健一 様 あて名 〒113-0034 日本国東京都文京区湯島二丁目15番1-205		PCT 国際調査機関の見解書 （法施行規則第40条の2） [PCT規則43の2.1]	
		発送日 （日.月.年） 08.11.2016	
出願人又は代理人 の書類記号 XT0216W001		今後の手続については、下記2を参照すること。	
国際出願番号 PCT/J P 2016/074323	国際出願日 （日.月.年） 22.08.2016	優先日 （日.月.年）	
国際特許分類（IPC）Int.Cl. E02B7/26(2006.01)i			
出願人（氏名又は名称） 寺田 溥			

1. この見解書は次の内容を含む。

- 第I欄 見解の基礎
- 第II欄 優先権
- 第III欄 新規性、進歩性又は産業上の利用可能性についての見解の不作成
- 第IV欄 発明の単一性の欠如
- 第V欄 PCT規則43の2.1(a)(i)に規定する新規性、進歩性又は産業上の利用可能性についての見解、それを裏付けるための文献及び説明
- 第VI欄 ある種の引用文献
- 第VII欄 国際出願の欠陥
- 第VIII欄 国際出願についての意見

2. 今後の手続

国際予備審査の請求がされた場合は、出願人がこの国際調査機関とは異なる国際予備審査機関を選択し、かつ、その国際予備審査機関がPCT規則66.1の2(b)の規定に基づいて国際調査機関の見解書を国際予備審査機関の見解書とみなさない旨を国際事務局に通知していた場合を除いて、この見解書は国際予備審査機関の最初の見解書とみなされる。

この見解書が上記のように国際予備審査機関の見解書とみなされる場合、様式PCT/ISA/220を送付した日から3月又は優先日から22月のうちいずれか遅く満了する期限が経過するまでに、出願人は国際予備審査機関に、適当な場合は補正書とともに、答弁書を提出することができる。

さらなる選択肢は、様式PCT/ISA/220を参照すること。

見解書を作成した日 24.10.2016			
名称及びあて先 日本国特許庁（ISA/J P） 郵便番号100-8915 東京都千代田区霞が関三丁目4番3号	特許庁審査官（権限のある職員） 神尾 寧 電話番号 03-3581-1101 内線 3237	2 B	3 4 0 7

第 I 欄 見解の基礎

1. 言語に関し、この見解書は以下のものに基づき作成した。

出願時の言語による国際出願

出願時の言語から国際調査のための言語である _____ 語に翻訳された、この国際出願の翻訳文 (PCT規則12.3(a)及び23.1(b))

2. この見解書は、PCT規則 91 の規定により国際調査機関が許可した又は国際調査機関に通知された明らかな誤りの訂正を考慮して作成した (PCT規則 43 の 2.1(b))。

3. この国際出願で開示されたヌクレオチド又はアミノ酸配列に関して、以下の配列表に基づき見解書を作成した。

a. 出願時における国際出願の一部を構成する配列表

附属書C/ST.25テキストファイル形式

紙形式又はイメージファイル形式

b. 国際出願とともに、PCT規則13の3.1(a)に基づき国際調査のためにのみ提出された、附属書C/ST.25テキストファイル形式の配列表

c. 国際出願日後に、国際調査のためにのみ提出された配列表

附属書C/ST.25テキストファイル形式(PCT規則13の3.1(a))

紙形式又はイメージファイル形式(PCT規則13の3.1(b)及びPCT実施細則第713号)

4. さらに、複数の版の配列表又は配列表の写しが提出され、変更後の配列表又は追加の写しに記載された情報が、出願時における配列表と同一である旨、又は出願時における国際出願の開示の範囲を超えない旨の陳述書の提出があった。

5. 補足意見：

第V欄 新規性、進歩性又は産業上の利用可能性についてのPCT規則43の2.1(a)(i)に定める見解、それを裏付ける文献及び説明

1. 見解

新規性 (N)	請求項 請求項	1-4	有 無
進歩性 (I S)	請求項 請求項	1-4	有 無
産業上の利用可能性 (I A)	請求項 請求項	1-4	有 無

2. 文献及び説明

- 文献 1: JP 2003-253715 A (新興建材株式会社) 2003.09.10, 全文 (ファミリーなし)
- 文献 2: JP 9-31936 A (鹿島建設株式会社) 1997.02.04, 全文 (ファミリーなし)
- 文献 3: JP 2008-133602 A (清水建設株式会社) 2008.06.12, 全文 (ファミリーなし)
- 文献 4: JP 2009-91736 A (大日産業株式会社) 2009.04.30, 全文 (ファミリーなし)

請求項 1-4 に係る発明は、国際調査報告に引用されたいずれの文献にも記載されておらず、当業者にとって自明なものでもない。

Description

SLUICE GATE

Technical Field

【 0 0 0 1 】

The present invention relates to a sluice gate installed in a sluice for water flow or ships. The gate accommodates high tide water, tsunami, high water (reverse flow from a main river to a tributary stream), ocean waves, flood wood flow etc.

Background Art

【 0 0 0 2 】

A large scale gate provided against high tide water, tsunami etc. is well known.

【 0 0 0 3 】

A torsion type structure has various advantage and the advantage gets more remarkable as a support width of the structure becomes larger. In case of a super large gate of 400 m width class, for instance, the gate weight is less than $1/2 \sim 1/3$ of other structure types. A low weight leads to a low construction cost (Patent Document 1)

【 0 0 0 4 】

Emerging type is a publicly known gate body opening and closure operation type. Although a gate body of this type used to be a bending type structure, application of a torsion type structure is made possible by this invention and a big amount of construction cost reduction will become a reality.

【 0 0 0 5 】

Fig. 1 illustrates emerging movement type of an openable storm surge gate. Fig. 1 represents a right half of the gate viewed from a port side. Fig. 1a is a plan of a gate body completely closed. Fig. 1b is a plan of a gate body completely opened. Fig. 1A is AA section of Fig. 1a. Fig. 1B is BB section of Fig. 1b. Fig. 1C is CC section of Fig. 1A. Fig. 1D is DD section of Fig. 1B.

【 0 0 0 6 】

Reference numeral 1 denotes a gate body completely closed) and 2 denotes a gate body completely opened. The sluice gate of Fig. 1 is in either state 1 or 2.

【 0 0 0 7 】

3 denotes a storage space of gate body 1 and 4 denotes a center line of the tidal gate.

【 0 0 0 8 】

Completely opened gate body 2 is stored in storabe space 3. Gate body 2 rises in used time, and moves to a position of completely closed gate body 1.

【 0 0 0 9 】

Patent Document 1: WO 2014/037987 A1

Disclosure of the Invention

Problems to be Solved by the Invention

【 0 0 1 0 】

Although the torsion structure has an overwhelming advantage in cost, its application to a gate has been limited to a flap gate that is fixed on the foundation ground via axle type supports. This invention enables application of the torsion structure to the emerging movement type of an openable storm surge gate and makes the overwhelming advantage of torsion structure even higher. The application is also applicable to a super large tidal gate having a structure support span between 200 to 600 m and more.

【 0 0 1 1 】

This invention shows resolutions to the following problems, contributing to implementation of a emerging movement type tidal gate of the torsion structure.

Problem 1: Cross-sectional restriction corresponding to high tide pressure and tide flow pressure

Problem 2: Gate body movement of floating body state and submerged body state

Problem 3: Spatial interference between cross-sectional restriction block parts

Problem 3.1: Interference of support brackets and reaction axles

Problem 3.2: Interference of support brackets and a bottom seal rubber

Problem 3.3: Interference of a sealing sill and reaction rollers

Problem 4: Sliding in stem direction of a side seal rubber

Problem 5: Increase of torsion moment

【 0 0 1 2 】

Problem 1: Cross-sectional restriction corresponding to high tide pressure and tide flow pressure

A torsion structure is characterized by a thin wall closed cross-section and a cross-sectional restriction. The cross-sectional restriction is a state of a gate body section restricted at a point whose restriction condition is parallel displacement restricted and rotational movement free. A storm barrier gate endures high tide pressure of hurricanes and is subject to tide flow pressure during its opening and closure operation. The restriction point is a reaction point of those loads. As quality of the loads is prominently different from each other, duplicate cross-sectional restrictions will be required with gate size growing. Difference of their loading conditions are as follows.

(1) Loading conditions of high tide pressure

The load magnitude is dominantly big compared to tide flow.

The load works on the gate of completely closed condition.

The load acts only from a sea side.

A restriction point which supports a dominantly big magnitude of load is set at a narrow space.

(2) Loading conditions of tide flow pressure

The load magnitude is dominantly small compared to high tide.

The load works on the gate at all gate positions during gate operation.

The load acts not only from a sea side but also from a port side.

【 0 0 1 3 】

Problem 2: Gate body movement in floating body state and in submerged body state

Existing emerging type gates are hoisted mechanically. In this case, a gate is only a heavy cargo and neither a floating body nor a submerged body. In case of a super large gate with a few hundreds meters width, gate operation by floating tanks will become necessary. Accordingly, there exist states of a floating body and a submerged body whose stability mechanisms are completely different. In the description from right now, definition of both states are simply recognized as follows. The case that float tank is 100 % submerged is "a state of submerged body" and the case that float tank is totally or partially emerges from the water is "a state of floating body" where the float tank buoyancy equals the gate weight. Stability mechanism are completely different between both states. In the state of floating body, buoyancy and dead weight of a gate body are equal, but in the state of submerged body, a gate is getting higher or lower and it is difficult for the gate to keep a rest state.

【 0 0 1 4 】

Problem 3: Spatial interference between cross-sectional restriction block parts

Fig. 2 illustrates a cross-sectional restriction block. The block includes mechanisms of cross-sectional restriction and bottom sealing. Section (Completely closed) shows a tidal gate, and a storage space and place of Detail A. Detail A (Completely closed) illustrates a gate body completely closed and Detail A (partially opened) illustrates a gate body partially opened. There are a restriction metal (support bracket), a seal sill for a bottom seal rubber and a roller escape on a concrete wall. A restriction metal (reaction axle), a bottom seal rubber and a reaction roller set on a gate body partially opened rise with the gate body and the reaction axle will mate to the support bracket and the seal rubber will mount the seal sill, and supporting and water sealing of the gate bottom will finish up. The reaction roller works as a reaction point of the tide flow pressure acting on the gate body during its rising and will complete this role by resting on the roller escape when the gate is completely closed.

Although no spatial interference will occur between parts the cross-sectional restriction block composes during gate operation at working time, interferences will occur during gate body insert operation into a gate slot at maintenance time etc. In short, interference problems at gate body insert operation are (3.1) support brackets and reaction axles, (3.2) support brackets and a bottom seal rubber and (3.3) reaction rollers and a seal sill. Each problem is explained in the following.

【 0 0 1 5 】

Problem 3.1: Interference of support brackets and reaction axles

As illustrated on Fig. 2, support brackets (restriction metals on a concrete wall) and reaction axles (restriction metals on a gate body) will spatially interfere each other at construction or maintenance time, and gate descending and rising in a gate slot will be blocked.

【 0 0 1 6 】

Problem 3.2: Interference of support brackets and a bottom seal rubber

As illustrated on Fig. 2, support brackets (restriction metals on a concrete wall) and a bottom seal rubber (on a gate body) will spatially interfere each other at construction or maintenance time, and gate

descending and rising in a gate slot will be blocked.

【 0 0 1 7 】

Problem 3.3: Interference of a sealing sill and reaction rollers

As illustrated on Fig. 2, reaction rollers (on a gate body) and a seal sill (on a concrete wall) will spatially interfere each other at construction or maintenance time, and gate descending and rising in a gate slot will be blocked.

【 0 0 1 8 】

Problem 4: Sliding in stem direction of a side seal rubber

Fig. 3 illustrates sliding direction of a P type side seal rubber on a sill. The P type rubber bolted on a gate body by a clamp bar comprises a bulb and a stem. The figure shows four sliding directions in bulb and stem directions. Sliding direction of the rubber during gate operation at working time is in bulb direction and it will be made without any trouble. Sliding in stem direction of the rubber will be necessary when the gate is inserted into or taken out from a gate slot during construction or maintenance period and the sliding direction with × mark on the figure will decrease the seal life time eminently since the bulb is pinched between the clamp bar and the sill.

【 0 0 1 9 】

Problem 5: Increase of torsion moment

In the case of gate operation by floating tanks, torsion moment composed of buoyancy working on a gate body and downward reaction force working on cross-sectional restriction points will arise and torsion moment working on the gate body will increase since the buoyancy made torsion moment works in a same direction as high tide pressure torsion moment.

Means of Solving the Problems

【 0 0 2 0 】

A tank arrangement, duplicate cross-sectional restrictions, a side roller block, an openable reaction roller, an openable bottom seal, a reaction axle, openable side seal, gate slot inserting steps and a stress reduction cross-sectional restriction are presented to implement an emerging movement type opening/closing gate which is equipped with costly advantageous torsion structure. The tank arrangement enables a gate body in working condition be operated in submerged body state, the duplicate cross-sectional restrictions can correspond to both high tide pressure and tide flow pressure which are prominently different in their qualities, the side roller block, the openable reaction roller and the openable bottom seal resolve spatial interference problems in gate operation at construction or maintenance time, presentation of compact reaction axles which endures to an extremely big load enables cross-sectional restriction points be set at a narrow gap in a storage space, the openable side seal and the gate slot inserting steps prevent side seal rubber from being damaged and the stress reduction cross-sectional restriction can cut an amount of the high tide pressure torsion moment by much more than 50 % through a help of gate buoyancy.

Brief Description of Drawings

【 0 0 2 1 】

- Fig. 1 is a explanatory drawing of an emerging movement type opening /closure tidal gate.
 Fig. 2 is an example of cross-sectional restriction block for torsion structure emerging type.
 Fig. 3 is a explanatory drawing of sliding directions of a P-shape seal rubber on a seal sill.
 Fig. 4 is an example of tidal sluice gate planning data for embodiments.
 Fig. 5 is total arrangement (plans and longitudinal sections) of Embodiment 1.
 Fig. 6 is a total arrangement (cross sections) of Embodiment 1.
 Fig. 7 illustrates gate body inclinations and tank arrangements of Embodiment 1.
 Fig. 8 illustrates opening/closure operation force of Embodiment 1.
 Fig. 9 illustrates support and sealing mechanisms of Embodiment 1.
 Fig. 10 illustrates Embodiment 2. It is support bracket and reaction axle details of Embodiment 1.
 Fig. 11 illustrates Embodiment 3. It shows a openable side seal detail.
 Fig. 12 illustrates Embodiment 3. It shows gate slot inserting steps in a table style.
 Fig. 13 illustrates Embodiment 3. It shows gate slot inserting steps in a drawing style.
 Fig. 14 illustrates Embodiment 4. It shows stress reduction cross-sectional restriction arrangements.
 Fig. 15 illustrates Embodiment 4. It shows a results of Fig. 14.

Embodiments of the Invention

【 0 0 2 2 】

Fig. 4 is an example of tidal sluice gate planning data. Concerning hydraulic conditions on Fig. 4, ordinary water height is given in the form of site depth and a tide difference at high tide water is given as 5 m. In short, the port side depth is 16 m and the sea side depth is 21 m at high tide. Tide level is always moving and the port side level at construction, maintenance, gate operation or high tide can not be constant. Nevertheless it is assumed because of a simplification that the port side sea level is constant and can be defined as a site depth since purpose of the planning data is a feasibility study. In this Description, the port side depth and the sea side depth at high tide are sometimes called as a site water level and a high tide level respectively. The steel weight in Fig. 4 is rough estimate excluding a ballast.

Embodiment 1

【 0 0 2 3 】

Fig. 5 thru Fig. 9 are an example based upon the data of Fig. 4 and illustrates an emerging movement type tidal sluice gate.

【 0 0 2 4 】

Fig. 5 illustrates the right half of the tidal sluice gate viewed from a port side. Fig. 5a is a plan of a gate completely closed. Fig. 5b is a plan of a gate completely opened. Fig 5A is AA section of Fig. 5a. Fig. 5B is BB section of Fig. 5b. A upper side on Fig. 5a and Fig. 5b is a sea side and a lower side on them is a port side.

【 0 0 2 5 】

5 denotes a gate body completely closed. 6 denotes a gate body completely opened. The sluice gate of Fig. 5 is in either state 5 or 6.

【 0 0 2 6 】

7 denotes a storage space of the gate body 5, 8 denotes a center line of the tidal sluice gate, 9 denotes an interval gate completely closed, 10 denotes an interval gate completely opened, 11 denotes a side roller block, 12 denotes a side roller guide, 13 denotes a watertight bulkhead, 14 denotes a cross-sectional restriction blocks, 15 denotes a bottom roller and 16 denotes a bottom roller mounting.

【 0 0 2 7 】

A cross section of the gate body 5 and 6 is a closed thin shell section.

【 0 0 2 8 】

Fig. 6 is cross sections of the sluice gate shown on Fig. 5. Fig. 6C is CC section of Fig. 5A. Fig. 6D is DD section of Fig. 5A. Fig. 6E is EE section of Fig. 5B. Fig. 6F is FF section of Fig. 5B. A right side on Fig. 6C thru Fig. 6F is a sea side and a left side on them is a port side.

【 0 0 2 9 】

17 denotes coupling wedges, 18 denotes a left balance tank, 19 denotes a right balance tank, 20 denotes a site water level and 21 denotes a high tide level. Parts which are identical on Fig. 5 are given identical reference numbers on Fig. 6.

【 0 0 3 0 】

Fig. 7 illustrates gate body inclinations and buoyancy and gravity which tie to the inclination, and arrangements of tank 18, 19 and 19a.

【 0 0 3 1 】

The gate body inclinations shown are in submerged body states of rising and descending cases and in floating body state. The inclination in a submerged body state is caused from roller frictions. The Inclination in floating body state is caused from a gap between a gate body gravity center and a buoyancy center, and a ballast is taken in the gate body to reduce the inclination. Roller friction is not considered in an inclination angle calculation since stability in floating body state is quite big (corresponding to previously mentioned "Problem 2: Gate body movement in floating body state and submerged body state". A working place and a direction of the forces which tie to the gate body inclination are shown by arrows on Fig. 7).

【 0 0 3 2 】

The tank arrangement includes a left balance tank 18, a right balance tank 19 and a descending tank 19a, total buoyancy of the balance tanks 18 and 19 is just a bit bigger than the gate weight and their buoyancy center conforms to the gate body gravity center and their roof height conforms to the site water level (refer to the left balance tank 18, the right balance tank 19 and the site water level 20 on Fig. 6C and Fig. 6D). The descending tank 19a is located in the right balance tank 19, its center conforms to the gate gravity center and a buoyancy volume of the balance tanks 18 and 19 subtracted by the descending tank 19a is just a bit smaller than weight of the gate body 5. The left balance tank 18 and the right balance tank 19 are in a state of submerged body and gate operation at working condition is made by pouring/discharging water into or from the descending tank (corresponding to previously mentioned "Problem 2: Gate body movement in floating body state and submerged body state").

【 0 0 3 3 】

Fig. 8 illustrates descending force and rising force of opening/closure operation in submerged body state (descending and rising cases) and in floating body state. The gravity and the buoyancy in the figure correspond to the arrows on Fig. 7. Opening/closure operation in floating body state is made by pouring/discharging water into or from a gate body.

【 0 0 3 4 】

Fig. 9 illustrates support and sealing mechanisms of a gate body. Fig. 9a is a right end part detail of the completely closed gate body 5 shown on Fig 5A. Fig. 9A is AA section of Fig. 9a. Fig. 9B is BB section of Fig. 9a. Fig 9C is CC section of Fig. 9a. Fig. 9D is Detail D of Fig. 9B. Fig. 9E is Detail E of Fig. 9a. Fig. 9F is FF section of Fig. 9E. Fig. 9G is GG section of Fig. 9E and illustrates the cross-sectional restriction block 14. Fig. 9b illustrates a descending state of the completely closed gate body 5 of Fig. 9G.

【 0 0 3 5 】

22 denotes a main roller, 23 denotes a bottom seal rubber, 24 denotes a side seal rubber, 25 denotes a support bracket, 26 denotes a reaction axle, 27 denotes a reaction roller and 28 denotes a rotation axle of the bottom seal rubber 23 and the reaction roller 27. Parts which are identical on Fig. 5 or Fig. 6 are given identical reference numbers on Fig. 9.

【 0 0 3 6 】

The cross-sectional restriction block 14 consists of the support bracket 25, the reaction axle 26, the bottom seal rubber 23 and the reaction roller 27.

【 0 0 3 7 】

High tide pressure working on the completely closed gate body 5 is supported by the support bracket 25 and the reaction axle 25 (a cross-sectional restriction point for high tide pressure). Torsional moment composed of the high tide pressure and its reaction force is carried to a right end of the gate body 5 through torsional rigidity and balances a coupling force working on the wedges 17. Tide flow pressure working on the gate body during opening/closure operation is supported by the reaction roller 27 (a cross-sectional restriction point for tide flow pressure). Torsional moment composed of the tide flow pressure and its reaction force is carried to a right end of the gate body 5 through torsional rigidity and balances a coupling force working on the main wheels 22 (corresponding to previously mentioned "Problem 1: Cross-sectional restriction corresponding to high tide pressure and tide flow pressure").

【 0 0 3 8 】

The side roller block 11 is joined to the gate body 5 by an axle and spatial interference between the support bracket 25 and the reaction axle 26 during gate operation in construction or maintenance period is evaded by a change of gate position in a gate slot through the block 11 rotation around the axle (corresponding to previously mentioned "Problem 3.1: Interference of support brackets and reaction axles"). The bottom seal rubber 23 and the reaction roller 27 are integral structure and an interval between a concrete wall and a gate body is opened by their rotation around the rotation axle 28 at construction or maintenance period. Spatial interference between the support bracket 25 and the bottom seal rubber 23 can be evaded by this interval openable procedure (corresponding to previously mentioned "Problem 3.2: Interference of support brackets and a bottom seal rubber"). And spatial interference between the reaction roller 27 and the

seal sill shown on Fig. 2 can be evaded also (corresponding to previously mentioned "Problem 3.3: Interference of a sealing sill and reaction rollers"). Although rotation in a vertical plane around the rotation axle 28 of the bottom seal rubber 23 and the reaction roller 27 is presented here to solve their spatial interference problems through an interval openable procedure, the procedure can be also put into practice by rotation in a horizontal plane, parallel shift in a horizontal plane etc. Mechanism to realize these procedures can be a slide mechanic, link mechanic etc.

【 0 0 3 9 】

The side seal rubber 24 is fixed on the gate body 5 and has no rotation axle such as the rotation axle 28 of the bottom seal rubber 23. Evading of the X marked stem direction sliding shown on Fig. 3 becomes a reality in gate slot inserting steps of the gate body 5 for construction or maintenance work (will be explained again later).

Embodiment 2

【 0 0 4 0 】

Fig. 10 is an example based upon the data of Fig. 4 and illustrates details of the support bracket 25 and the reaction axle 26 of Embodiment 1.

【 0 0 4 1 】

Fig. 10a is an enlarged view of Fig. 9b which is a side view of the cross-sectional restriction block 14. Fig. 10A is AA section of Fig. 10a and shows an elevation of the support bracket 25. Fig. 10B is BB section of Fig. 10a and shows an elevation of the reaction axle 26. Fig. 10C is CC section of Fig. 10B. Fig. 10D is DD section of Fig. 10B. Fig. 10E is EE section of Fig. 10B. Fig. 10F is FF section of Fig. 10B.

【 0 0 4 2 】

29 denotes hubs, 30 denotes oil-less bearings and 31 denotes an axle mating part of the reaction axle 26 where the support bracket 25 contacts the reaction axle 26. Parts which are identical on Fig. 9 are given identical reference numbers on Fig. 10.

【 0 0 4 3 】

A set of the support bracket 25 and the reaction axle 26 is installed at a narrow interval between a gate body and a concrete wall. A load working on it is high tide pressure and extremely big which goes to scale at 50 times of tide flow pressure load (approximately 1000 tf). The axle mating part 31 of the reaction axle 26 is hog-backed and formed according to a bearing surface design and the hubs 29 and the oil-less bearings 30 which are arranged at both ends of the reaction axle 26 are formed according to a static load design so that a set of the support bracket 25 and the reaction axle 26 may be compact sized. A bearing surface of the reaction axels 26 slides by max. 3.8 mm due to high tide pressure. Since tidal level change is slower pace (per 6 hours or so), a static load design application to the oil-less bearing 30 is possible (corresponding to previously mentioned " of (1) Loading conditions of high tide pressure of Problem 1: Cross-sectional restriction corresponding to high tide pressure and tide flow pressure").

Embodiment 3

【 0 0 4 4 】

Fig. 11 thru 13 are an example based upon the data of Fig. 4. Fig. 12 and Fig.13 illustrate gate body inserting steps of the openable type side seal and Embodiment 1 type side seal which is hereinafter called as fixed type side seal or fixed type.

【 0 0 4 5 】

Fig. 11 illustrates details of the openable type side seal. Fig. 11a is details of a left end part of the completely closed gate body 5 shown on Fig. 5A. Fig. 11b is details of a left end part of the gate body 5 of Fig. 11a when the gate body 5 is inserted into a gate slot during construction or maintenance work. Fig. 11A is Detail A of Fig. 11a. Fig. 11B is BB section of Fig. 11A. Fig. 11C is CC section of Fig. 11A. Fig. 11D is Detail D of Fig. 11b. Fig. 11E is EE section of Fig. 11D. Fig. 11F is FF section of Fig. 11D.

【 0 0 4 6 】

32 is a rotation axle of the side seal rubber 24. Parts which are identical on Fig. 9 are given identical reference numbers on Fig. 11.

【 0 0 4 7 】

Although a main subject Fig. 11 shows is a side seal rubber, a bottom seal rubber 23 is also shown since the bottom seal rubber 23 and the side seal rubber 24 spatially relate each other.

【 0 0 4 8 】

A difference of the fixed type and the openable type is a part a corner rubber belongs to (bottom rubber or side rubber) and existence or not existence of the rotation axle 32 of the side seal rubber 24, and there is no difference in gate body operation at working condition and a difference appears in a gate slot inserting steps at maintenance period.

【 0 0 4 9 】

Fig. 12 and Fig. 13 illustrate a gate slot inserting steps of the openable type (Embodiment 3) and the fixed type (Embodiment 1).

【 0 0 5 0 】

Fig. 12 illustrates work content and open or close status of a side roller, a reaction roller, a bottom seal rubber and a side seal rubber of each step in a tabular form.

【 0 0 5 1 】

Fig. 13 illustrates Fig. 12 schematically.

【 0 0 5 2 】

The work contents of both types are exactly same at step 1 thru 3 and a difference of a side seal handling appears at step 4 and 5.

【 0 0 5 3 】

In case of the openable type, the gate body 5 moves to its working position through a closure of the side roller at step 4 and a stem direction sliding which is shown by x on Fig. 3 is evaded through a closure of the side seal rubber at step 5 (corresponding to previously mentioned "Problem 4: Sliding in stem direction of a side seal rubber"). All steps of the openable type are carried out in floating body state and the gate slot inserting step completes without the gate body 5 moves to its completely opened position.

【 0 0 5 4 】

In case of the fixed type, the gate body 5 moves down to its completely opened position (= height of

the gate body 6) at step 4, and then the gate body 5 moves to its working position through closure of the side roller at step 5. A stem direction sliding which is shown by x on Fig. 3 is evaded since a seal sill for a side seal rubber does not exist on a concrete wall at this gate position (corresponding to previously mentioned "Problem 4: Sliding in stem direction of a side seal rubber"). Although step 5 is made in submerged body state, the remove operation of the gate body 5 is carried out with a help of bottom rollers 15 (refer to Fig. 5) without any difficulties (corresponding to previously mentioned "Problem 2: Gate body movement in floating body state and submerged body state").

【 0 0 5 5 】

Above steps are the case when a gate body is inserted into a gate slot and steps when a gate body is taken out is reverse to them.

Embodiment 4

【 0 0 5 6 】

Fig. 14 and Fig. 15 are an example based upon the data of Fig. 4 and illustrate a cross-sectional restriction point arrangement to cut torsion moment through the use of buoyancy and its result.

【 0 0 5 7 】

Fig. 14 illustrates a cross-sectional restriction point arrangement. Fig. 14a is a plan of a right end part of the completely closed gate body 5. Fig. 14A is AA section of Fig. 14a. Fig. 14B is BB section of Fig. 14A. Fig. 14C is Detail C of Fig. 14B. Fig. 14D is Detail D of Fig. 14B.

【 0 0 5 8 】

Parts which are identical on Fig. 5 or Fig. 9 are given identical reference numbers on Fig. 14.

【 0 0 5 9 】

Different points from Embodiment 1 are cross-sectional restriction points against high tide pressure (the support bracket 25 and the reaction axle 26) are arranged on a sea side and top of the left and right balance tanks, 18 and 19, conforms to gate body top. Arrangements of cross-sectional restriction points against tidal flow pressure (the reaction roller 27) and the bottom seal rubber 23 are as same as Embodiment 1.

【 0 0 6 0 】

Fig. 15 illustrates a result of cross-sectional restriction point arrangement alternative graphically. High tide torsion moment and torsion moments composed of high tide pressure and buoyancy in case of Embodiment 1 and Embodiment 4 are shown on a lateral axis of sea side water depth. The site water depth is 16 m and high tide water depth is 21 m. Buoyancy impact on high tide torsion moment is 7 % of increase in case of Embodiment 1, whereas 53 % reduction in case of Embodiment 4. Although concrete wall cost may increase, a big cost merit does not change (corresponding to previously mentioned "Problem 5: Increase of torsion moment").

Explanation of Reference Numerals

【 0 0 6 1 】

- 5 Gate body (completely closed)

- 6 Gate body (completely opened)
- 7 Storage space
- 8 Center line of the tidal gate
- 9 Interval gate (completely closed)
- 1 0 Interval gate (completely opened)
- 1 1 Side roller block
- 1 2 Side roller guide
- 1 3 Watertight bulkhead
- 1 4 Cross-sectional restriction block
- 1 5 Bottom roller
- 1 6 Bottom roller mounting
- 1 7 Coupling wedge
- 1 8 Left balance tank
- 1 9 Right balance tank
- 1 9 a Descending tank
- 2 0 Site water level
- 2 1 High tide level
- 2 2 Main roller
- 2 3 Bottom seal rubber (Bottom seal)
- 2 4 Side seal rubber
- 2 5 Support bracket
- 2 6 Reaction axle
- 2 7 Reaction roller
- 2 8 Rotation axle of reaction roller 27 and bottom seal rubber 23
- 2 9 Hub
- 3 0 Oil-less bearing
- 3 1 Axle mating part of reaction axle 26 where support bracket 25 mates
 - 3 2 Rotation axle of side seal rubber 24

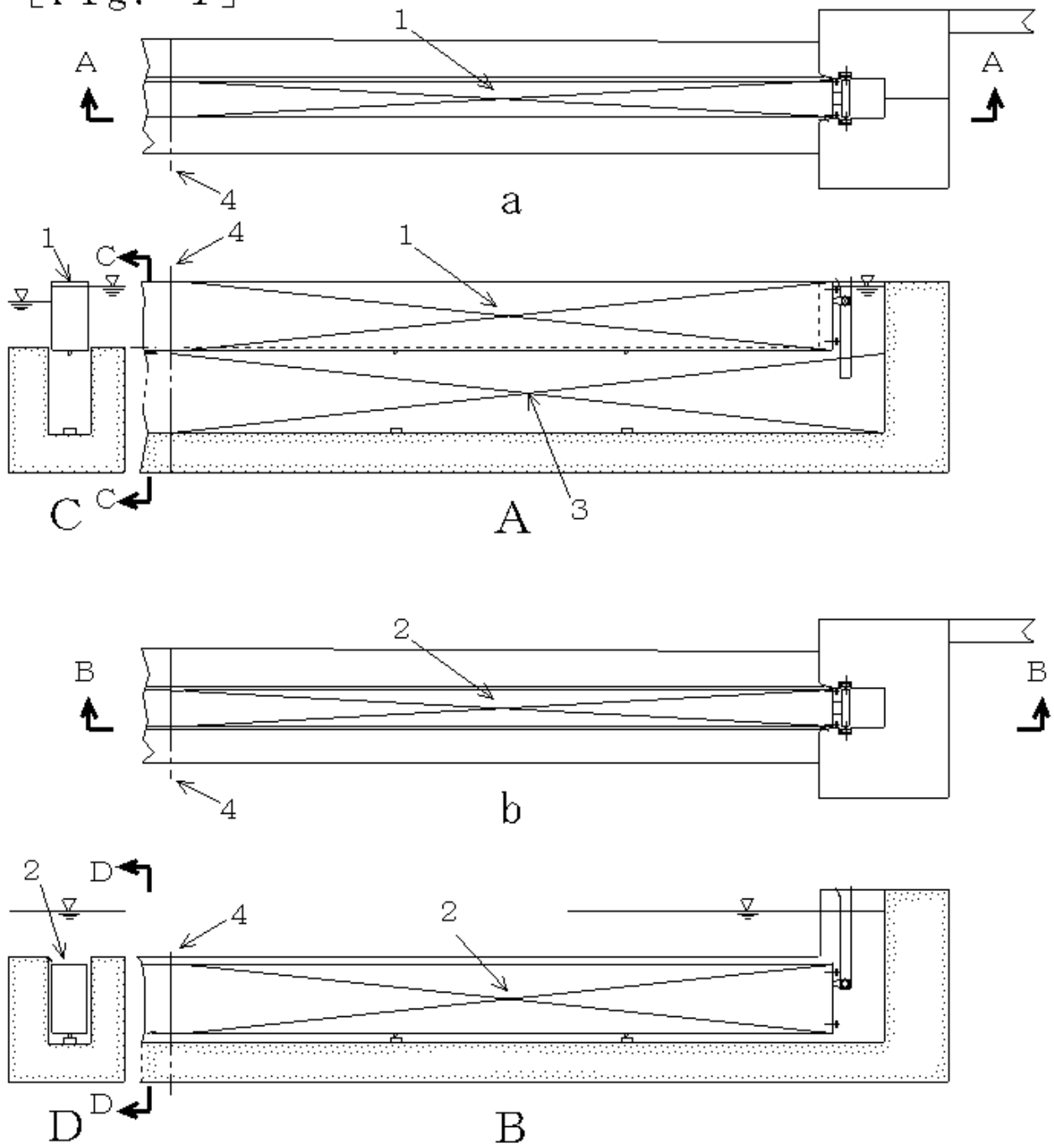
CLAIMS

- [請求項 1] 海に通じる水路を横切る方向に設けられ、開時は水底の格納スペースに格納され、閉時は前記格納スペースから上昇して前記水路を横切る位置に移動する扉体を備える水門において、前記扉体は、薄肉閉断面と、前記扉体の横断面が点で拘束されている状態である断面拘束とにより特徴付けられる捺り構造体をもち、前記扉体は、前記閉時において、前記薄肉閉断面で前記格納スペース内に高潮圧に耐える断面拘束点と、前記格納スペースの内面に接し、潮流圧に耐える反力ローラとを備え、前記反力ローラが開閉式であることを特徴とする水門。
- [請求項 2] 前記扉体は、前記格納スペースの内面に接する底部止水を備え、前記底部止水は、開閉式であることを特徴とする請求項 1 記載の水門。
- [請求項 3] 前記断面拘束点の拘束条件は、回転は自由であるが平行移動は拘束するものであり、かつ、前記断面拘束点は海側に配置されていることを特徴とする請求項 2 記載の水門。
- [請求項 4] 前記扉体は、前記閉時において、前記格納スペースに設けられる支承に係合する反力軸を備え、係合時の前記支承及び前記反力軸が前記断面拘束点を構成し、前記反力軸は、それぞれ軸受けを内蔵する複数のハブと、複数の前記ハブの間に設けられ、前記支承に係合する軸勘合部とを備え、前記軸勘合部の断面形状は、支圧接合とするために、前記支承の内面形状と同一形状とすることを特徴とする請求項 2 又は請求項 3 いずれかに記載の水門。

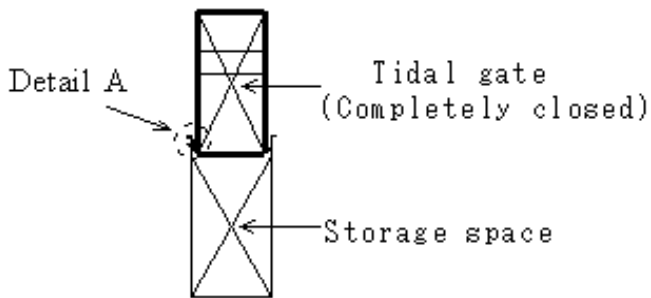
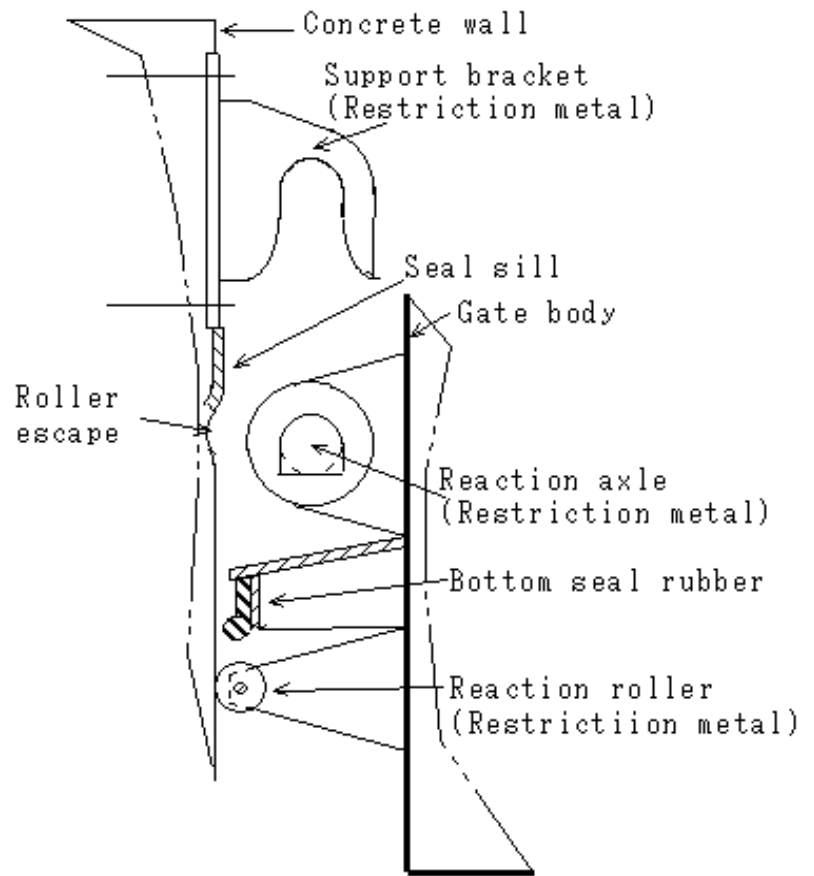
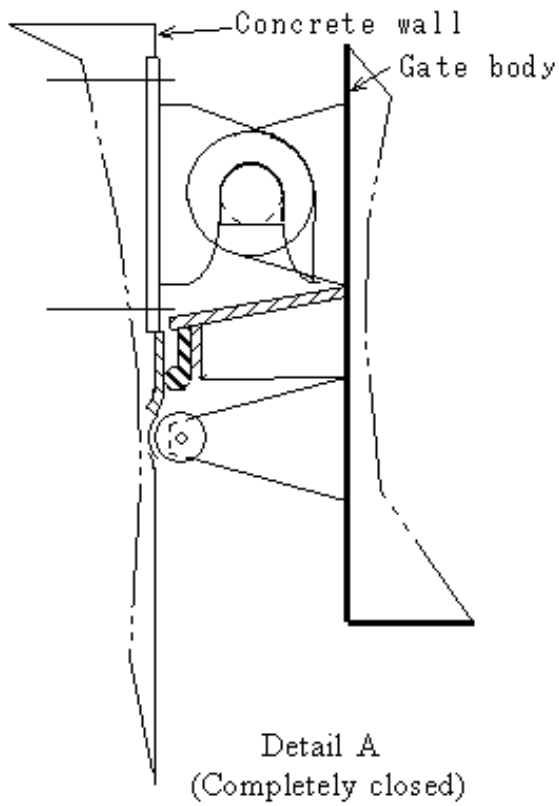
Abstract

A tank arrangement, duplicate cross-sectional restrictions, a side roller block, an openable reaction roller, an openable bottom seal, a reaction axle, openable side seal, gate slot inserting steps and a stress reduction cross-sectional restriction are presented to implement an emerging movement type opening/closing gate which is equipped with costly advantageous torsion structure. The tank arrangement enables a gate body in working condition be operated in submerged body state, the duplicate cross-sectional restrictions can correspond to both high tide pressure and tide flow pressure which are prominently different in their qualities, the side roller block, the openable reaction roller and the openable bottom seal resolve spatial interference problems in gate operation at construction or maintenance time, presentation of compact reaction axles which endures to an extremely big load enables cross-sectional restriction points be set at a narrow gap in a storage space, the openable side seal and the gate slot inserting steps prevent side seal rubber from being damaged and the stress reduction cross-sectional restriction can cut an amount of the high tide pressure torsion moment by much more than 50 % through a help of gate buoyancy.

[Fig. 1]



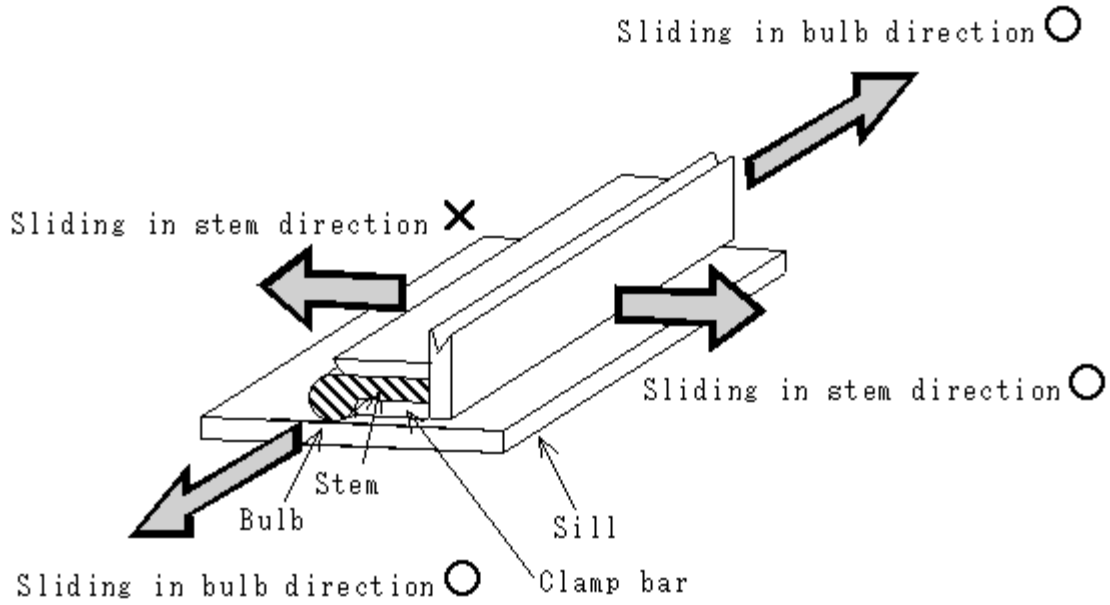
[Fig. 2]



Detail A (Partially closed)

Section (Completely closed)

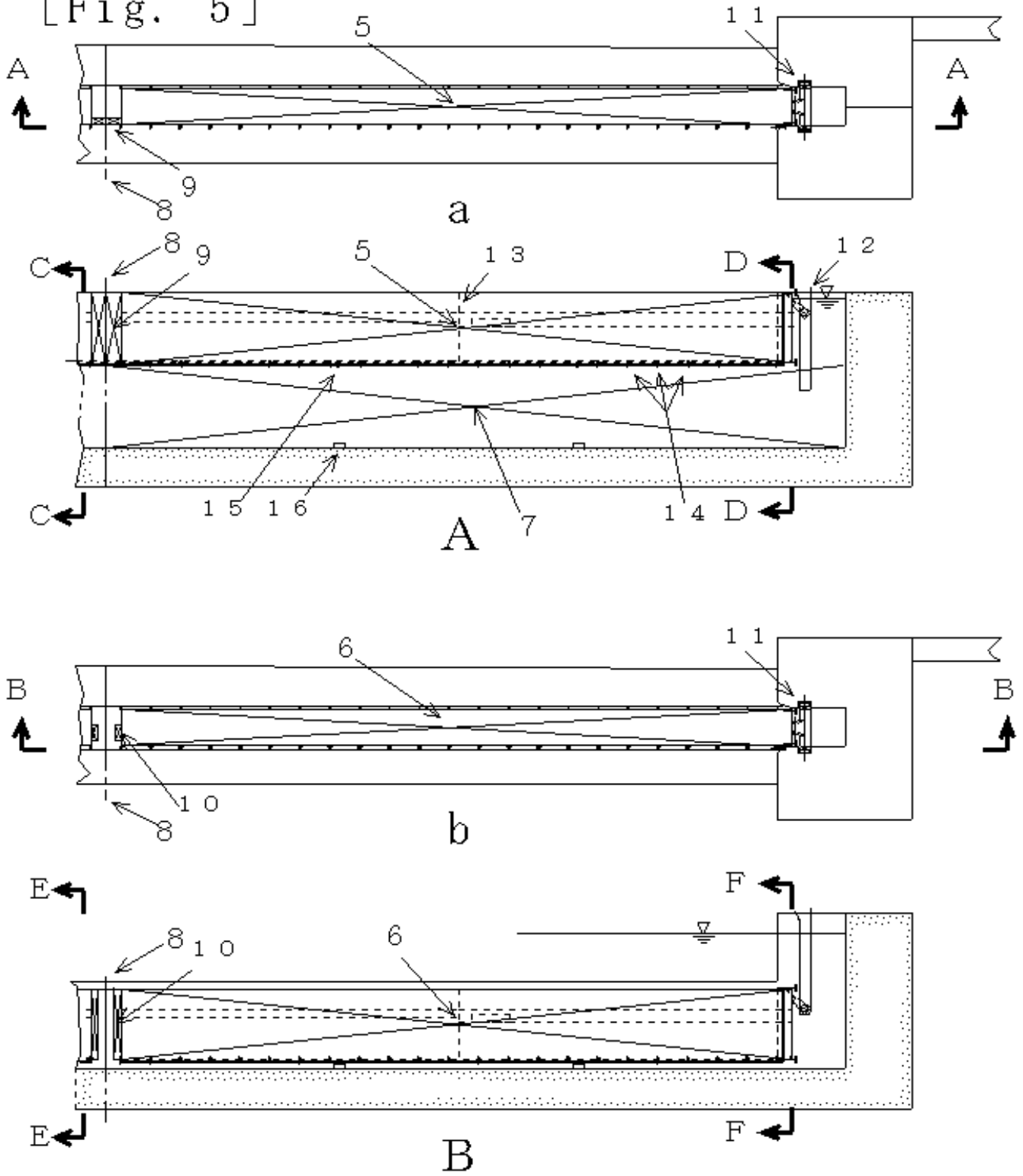
[Fig. 3]



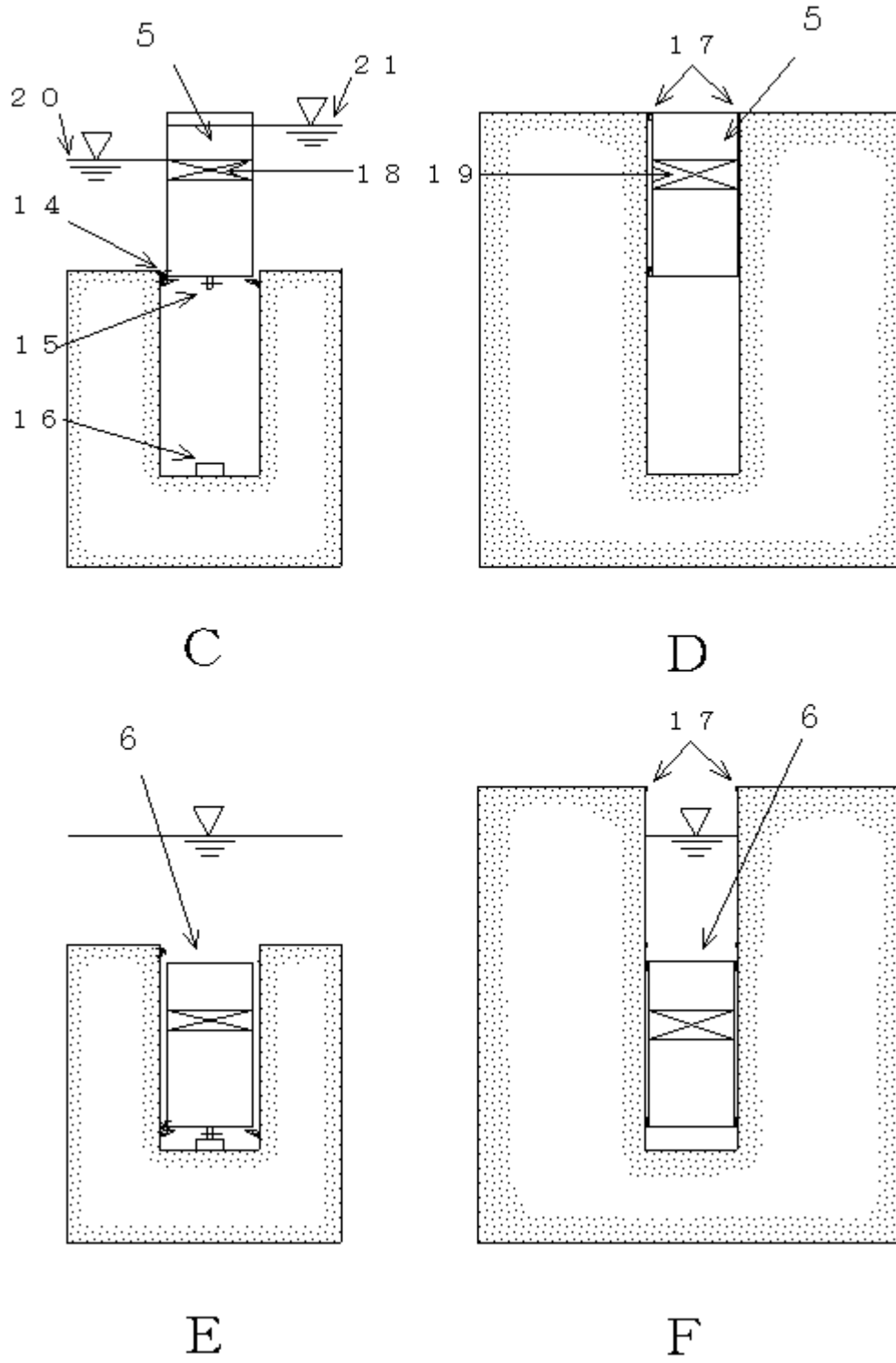
[Fig. 4]

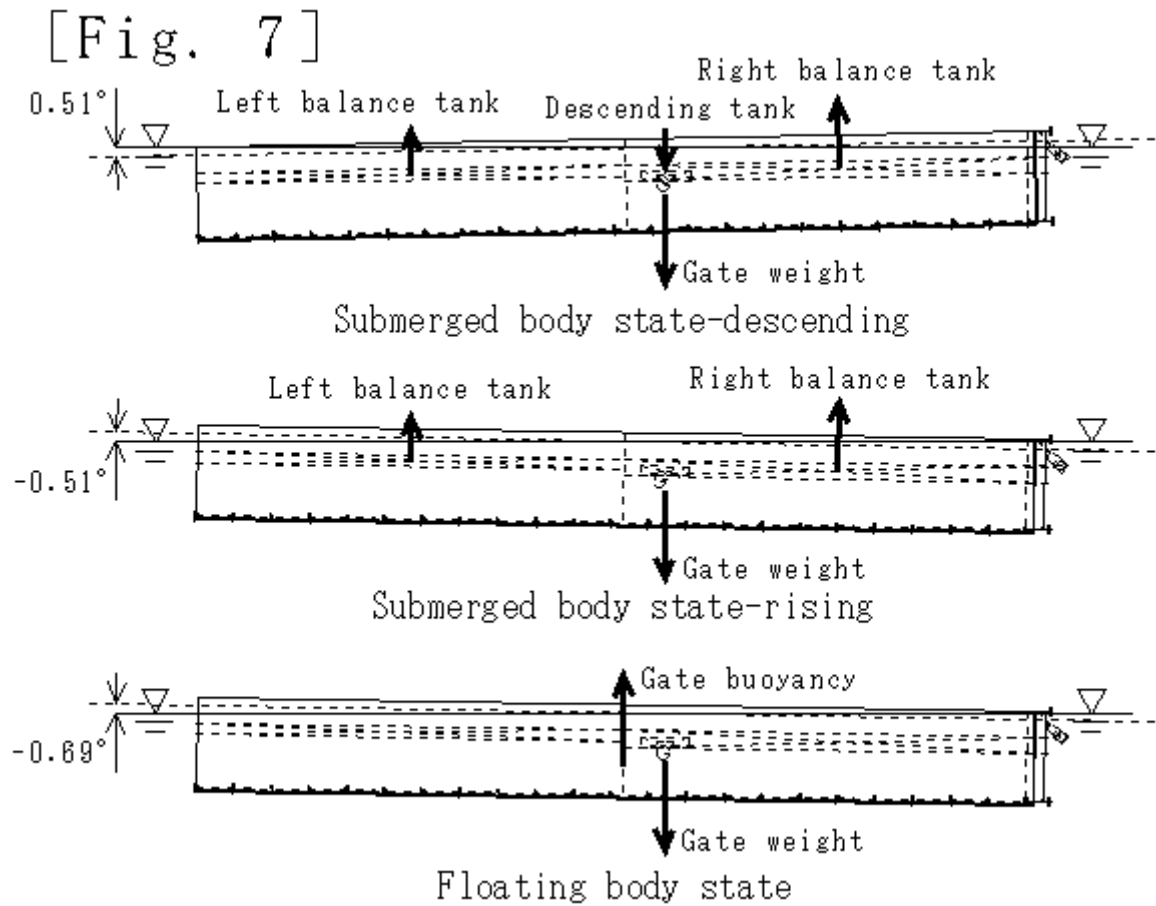
Item		Data	Unit	Note
Gate dimension	Span	450	m	○○ Port Design A (Super Large Tidal Gate) (excluding steel weight.)
	Height	23		
	Width	12.5		
Hydraulic condition	Site depth	16	m	
	Tide def.	5		
	Freeboard	2		
Steel weight (rough estimation)	Gate leaf	18000	tf	
	Embedded part	1500		
	Machine	500		
	Total	20000		
Gravity center	Horizontal	18.75	m	From the gate center
	Vertical	11		Gate height center
Operation condition	Tide flow velocity	1.60	m/sec	
		3.11	kt	

[Fig. 5]



[Fig. 6]

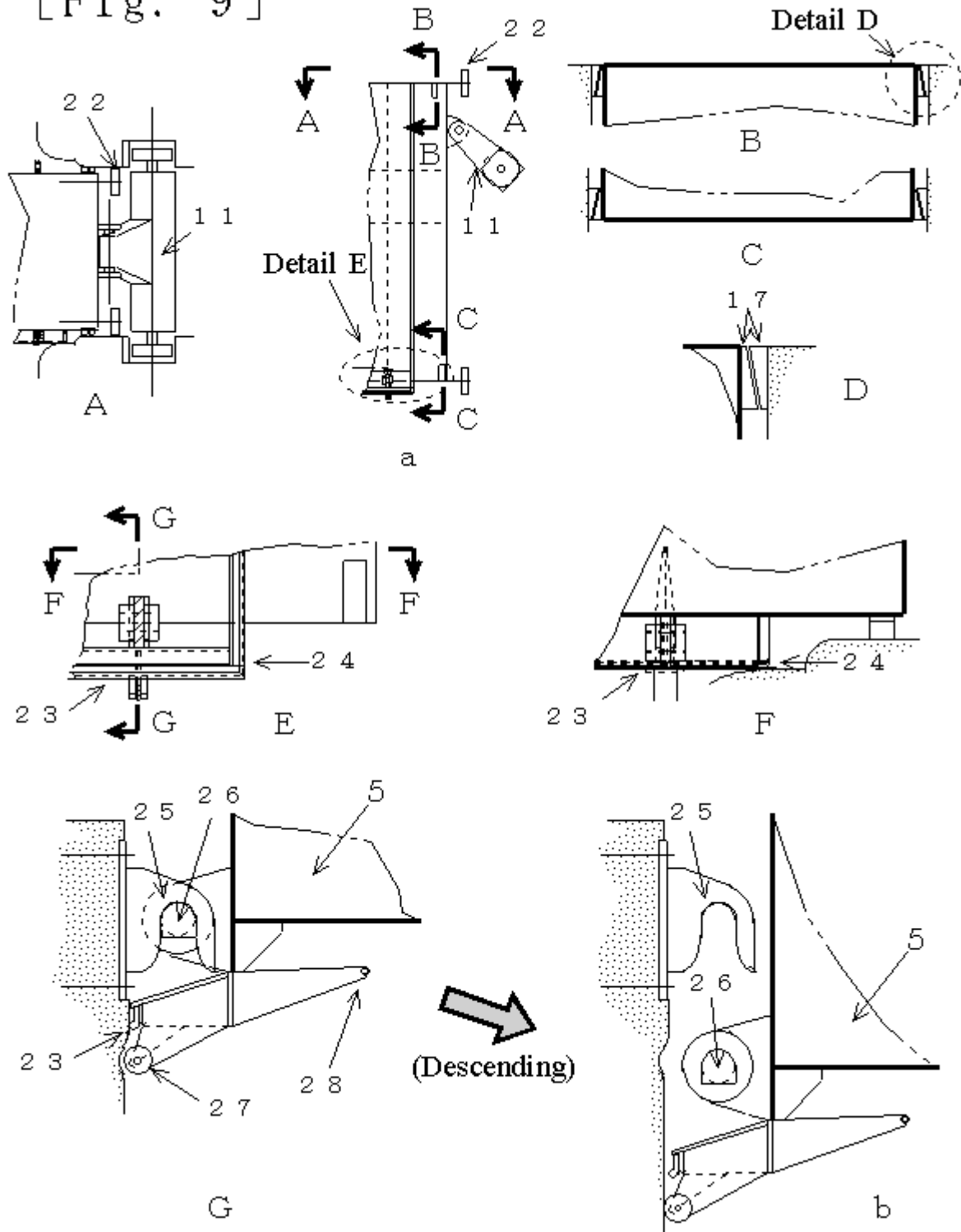




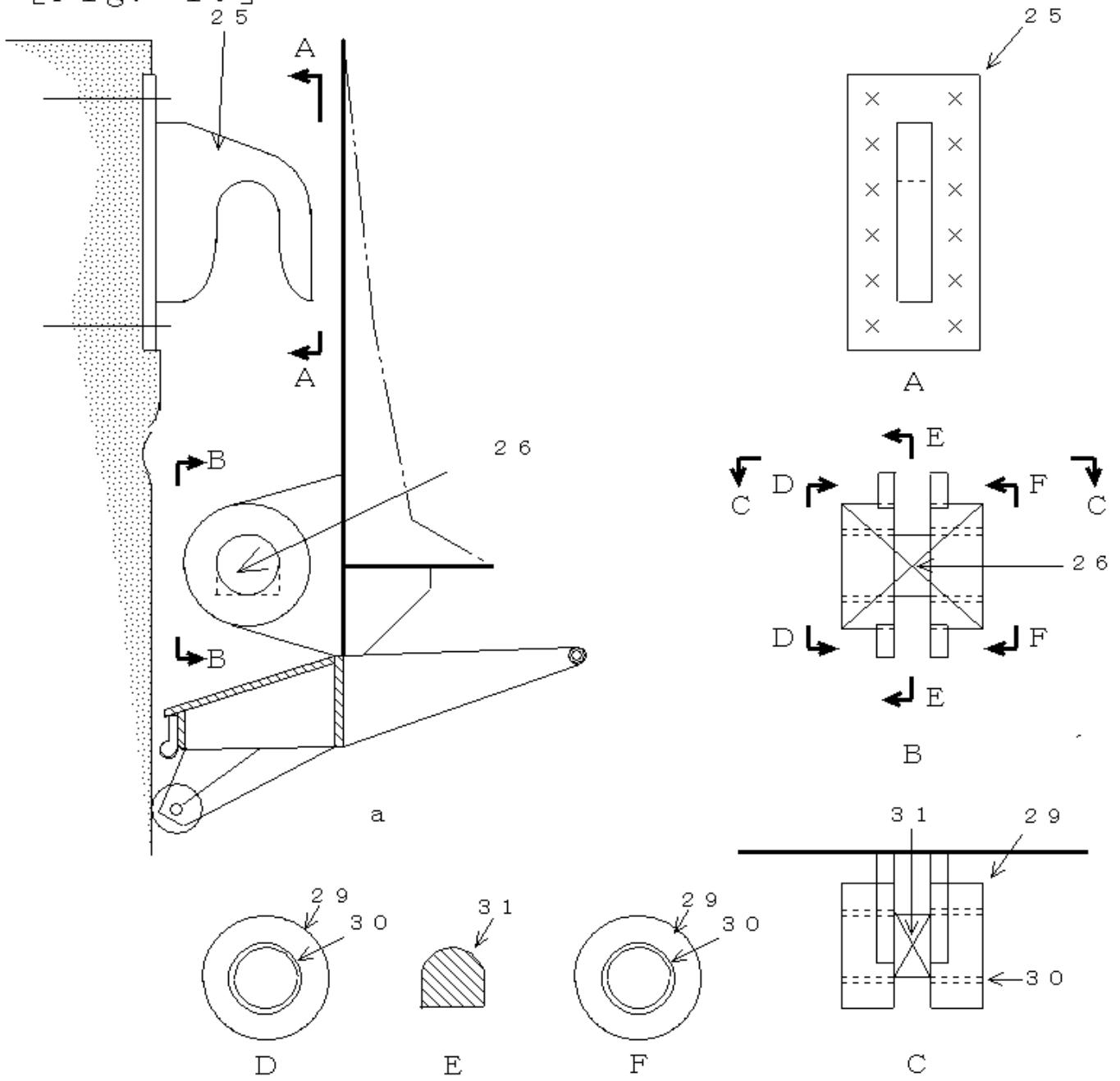
[Fig. 8]

Gate body state	Gravity (tf)		Buoyancy (tf)			Gate operation (tf)	
	Gate weight	Descending tank	Gate body	Left balance tank	Right balance tank	Descending force	Rising force
Submerged body-descending	10061	403	0	4163	6098	203	
Submerged body-rising	10061	0	0	4163	6098		200
Floating body state	10061	0	10061	0	0	0	

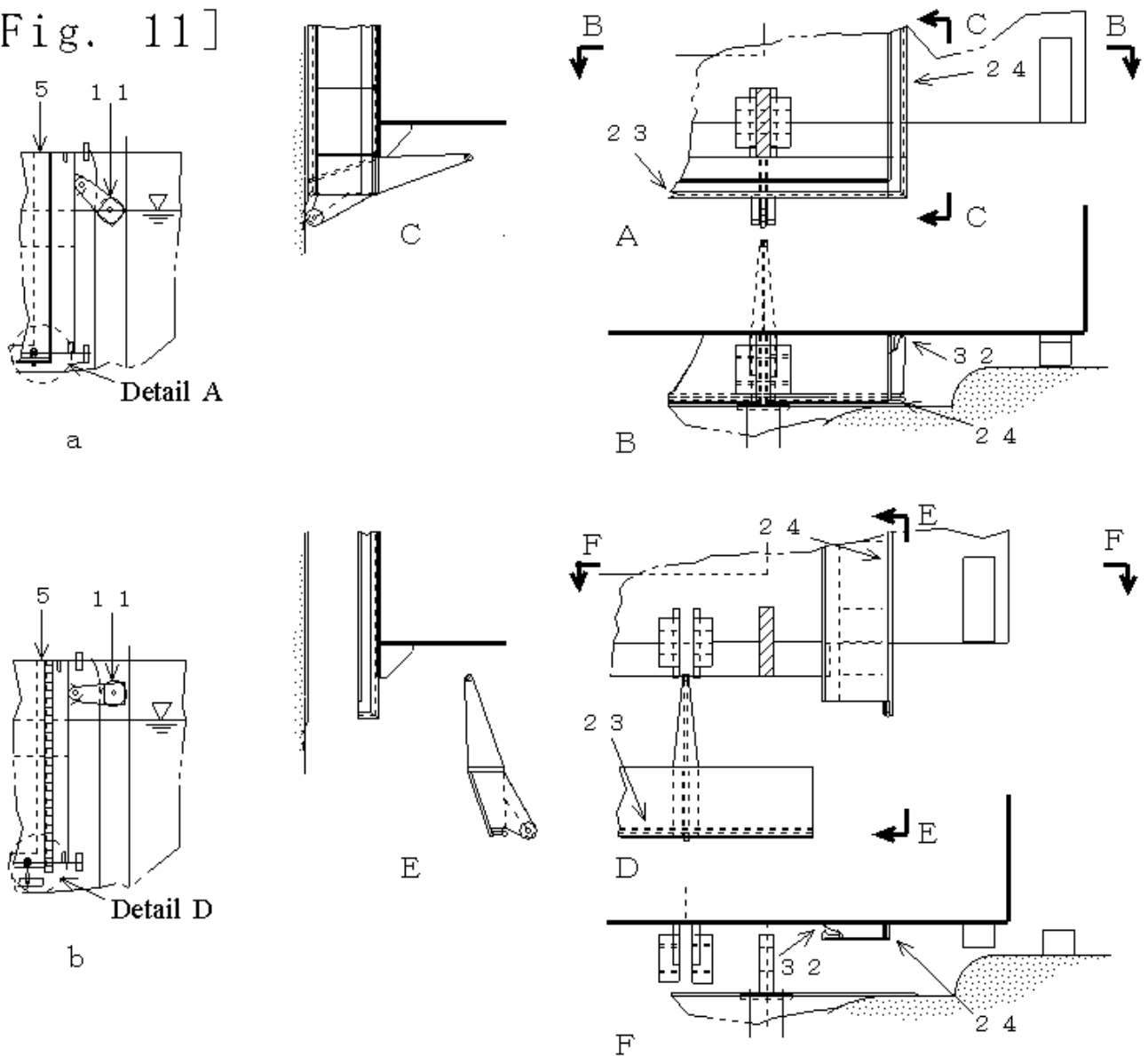
[Fig. 9]



[Fig. 10]



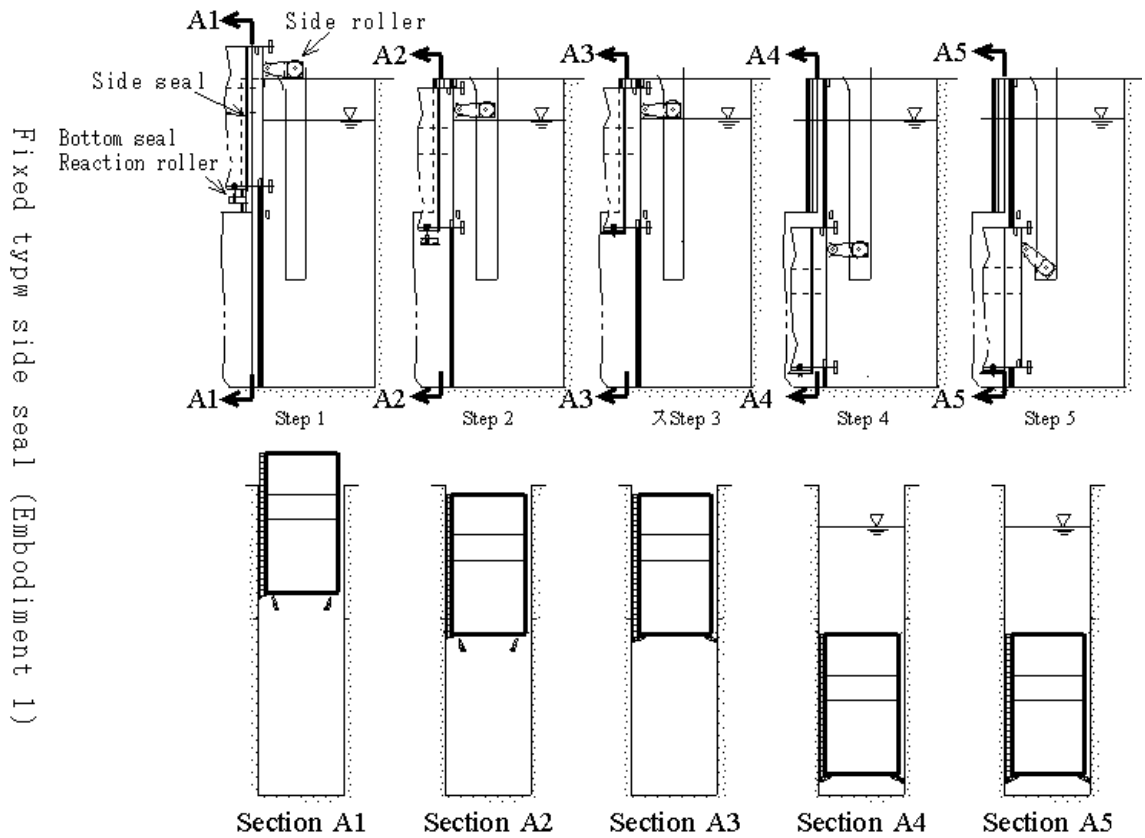
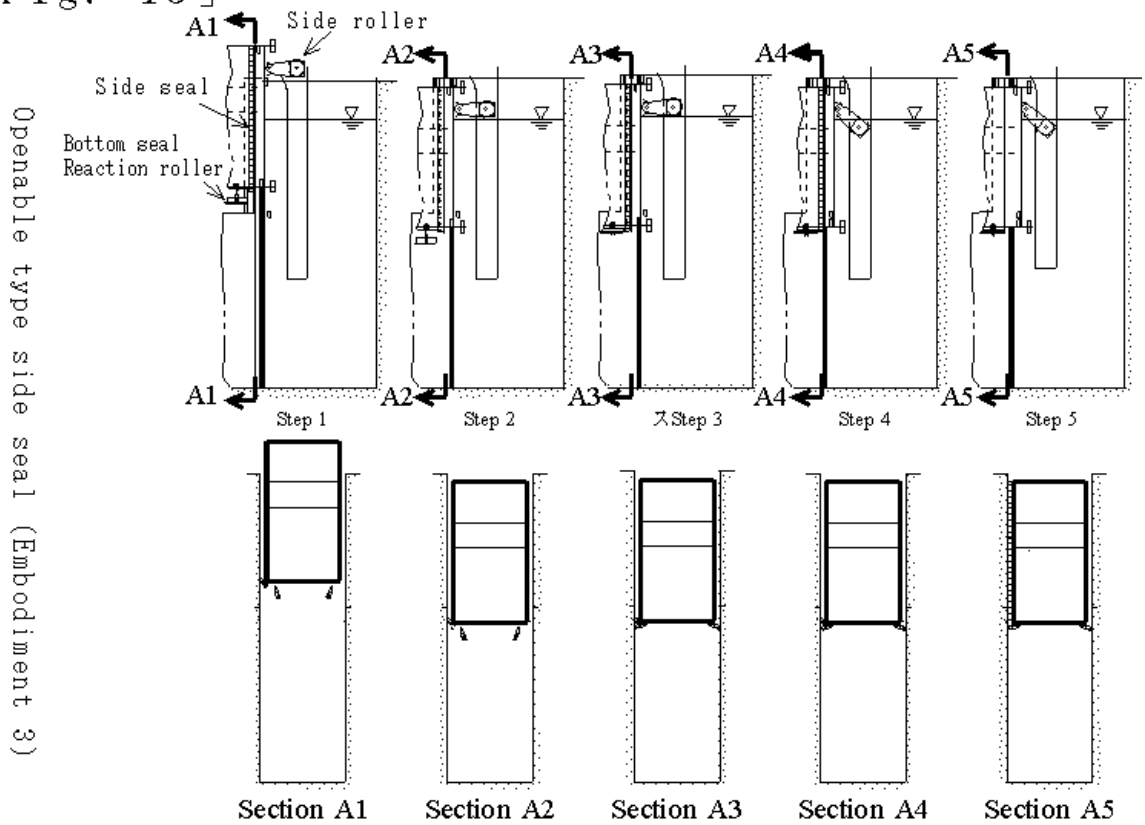
[Fig. 11]



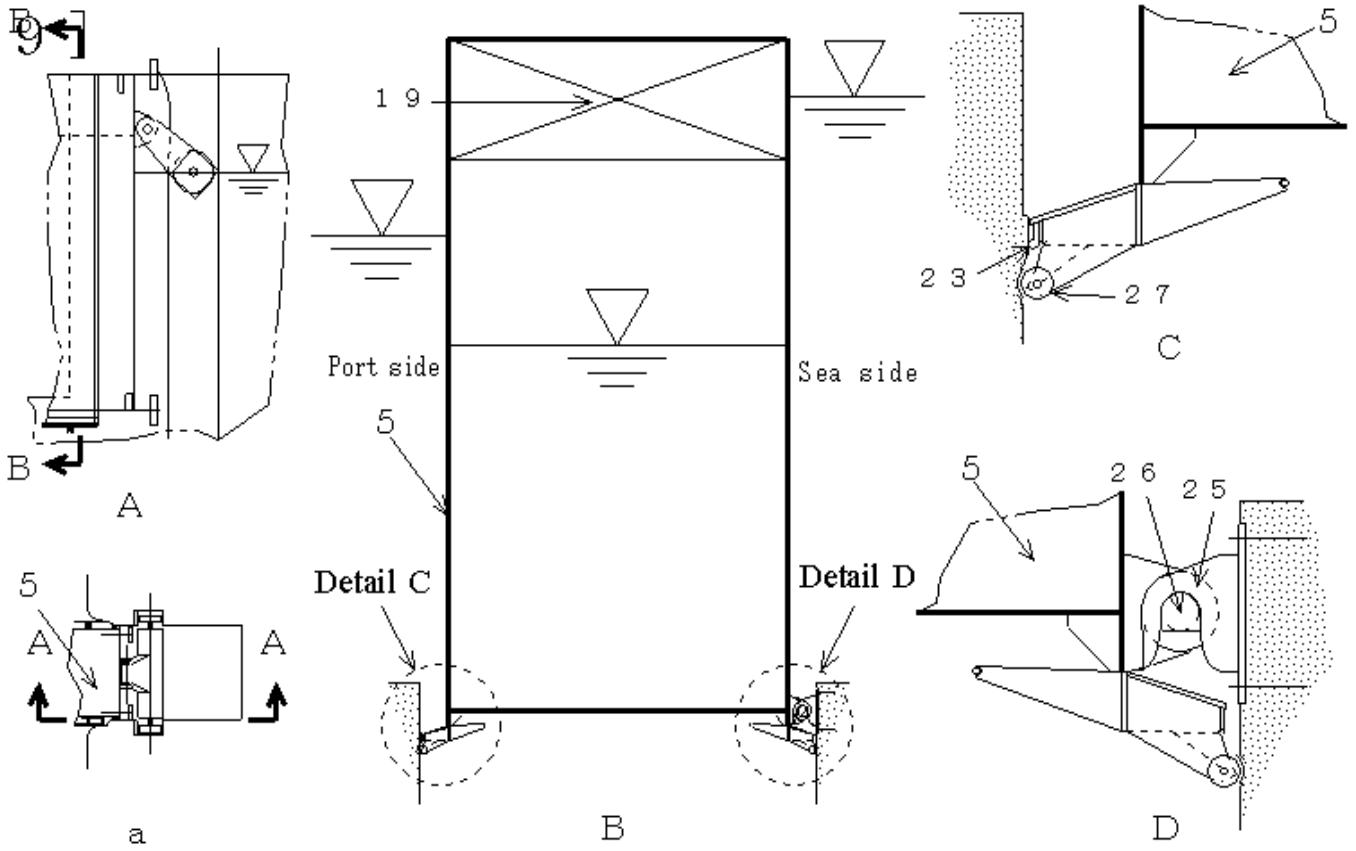
[Fig. 12]

Step number	Operable type (Embodiment 3)					Fixed type (Embodiment 1)						
	Work content	Status of open/close				Work content	Status of open/close					
		Side roller	Re-action roller	Bottom seal	Side seal		Side roller	Re-action roller	Bottom seal	Side seal		
1	Insert side roller	open	open	open	open	Insert side roller	open	open	close			
2	Descending					close				close	close	Descending 1
3	Close bottom seal											Close bottom seal
4	Close side roller	close	close	close	close	Descending 2	close					
5	Close side seal					Close side roller						

[Fig. 13]



[Fig. 14]



[Fig. 15] Torsion moment ÷ Design value (%)

